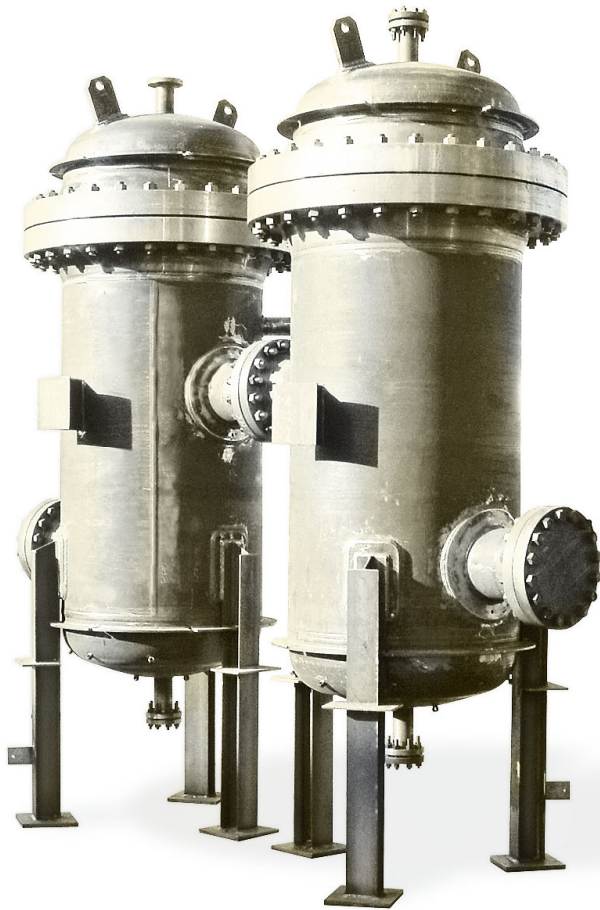


DG Series

DRY GAS FILTERS
TAILOR MADE



MAIN APPLICATIONS:

- PETROCHEMICAL
- OIL & GAS
- FINE CHEMICAL
- POWER GENERATION
- STEEL MILL

CHARACTERISTICS:

- Construction materials:
 - Carbon steel
 - Stainless steel
 - (other materials available as option).*
- Design according to:
 - ASME Sect. VIII Div. 1 & 2
 - EN 13445
 - (other calculation code available as option).*
- Conform to 2014/68/UE PED Directive.
- Conform to 2014/34/UE ATEX Directive.
- Available with U-Stamp certification.
- Top cover closure:
 - ANSI or EN flanges
 - Swing bolts - eye bolts type
 - Quick opening closure yoke or band lock type.
- Available for pressure up to 2500# rating.
- Vertical or horizontal arrangement.
- Suitable for natural or process gas filtration.
- In/out connections up to 36" (DN 900).
- Suitable for filtering cartridges series MG, FV, FV6, PBTG, PFG, WLGP, SLGP
- High filtration efficiency.
- Minimal initial pressure drop.

ASCO FILTRI

a **mott** company

DG Series

**DRY GAS FILTERS
TAILOR MADE**

TECHNICAL DATA

CONSTRUCTION MATERIAL

Body:

- Carbon steel
- 304/L SS
- 316/L SS
- *other materials available*

Raisers and tube sheet:

- Carbon steel
- 304 SS
- 316 SS

GASKETS

- SPIRAL WOUND
- KLINGERSIL
- BUNA-N
- VITON
- RING JOINT

IN/OUT

- Up to 36"

DESIGN PRESSURE

- Up to 2500#

ACCESSORIES

- DIFFERENTIAL PRESSURE GAUGE
- DIFFERENTIAL PRESSURE SWITCH
- VENT VALVE
- DRAIN VALVE
- PRESSURE SAFETY VALVE

Working principles:

DG series dry gas filters provide an efficient solution to remove dust and solids from process or natural gas steam, at very low pressure drop.

The dirty gas, entering the filter, encounter the cartridges support risers, the largest and heaviest solids are settled and in the mean time a direct impact of the inlet gas on the filtering cartridges is avoided.

The gas pass through the filtering cartridges from outside to inside which provide to collect the solids present; filtration efficiency depends from the installed cartridges type, usually filtration rating vary from 0.3 to 25 μm .

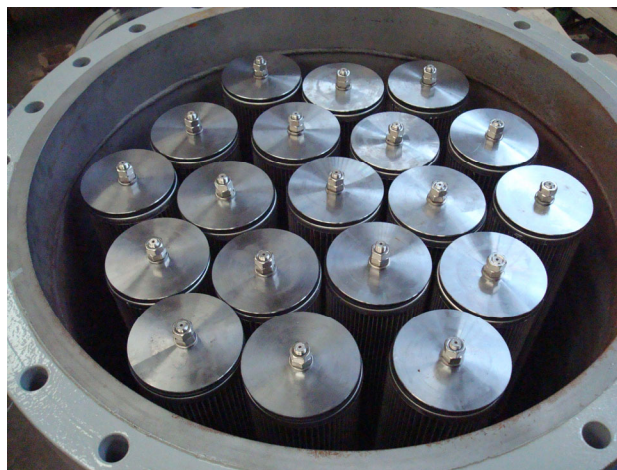
Larger solids (up to 10 - 20 μm) are collected on the external surface of the filtering cartridges, while the finest particles are collected in the thickness of the filter media.

The different available configuration allows to install disposable pleated or depth filtering cartridges as well as cleanable pleated wire mesh or sintered fibers filtering cartridges.

Pressure loss:

The DG series dry gas filters, are usually designed for a clean pressure drop from 0.05 to 0.15 barg, depending from the provided filtering cartridges.

Usually the filtering cartridges are replaced when 1 barg pressure drop is reached.



ASCO Filtri S.p.A.

Viale delle Scienze, 8
20082 Binasco (MI) - Italy
Phone: +39 02 89703.1

Fax: +39 02 89703.410

E-mail: info@ascofiltri.com

Web: www.ascofiltri.com

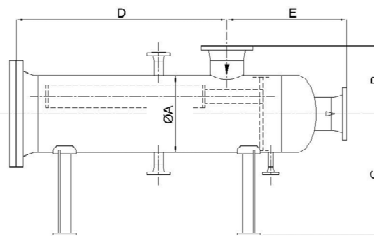
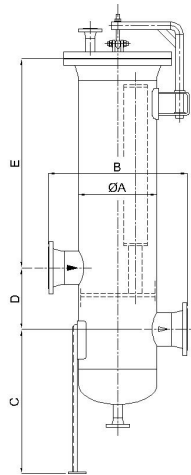
ASCO
FILTRI
a **mott** company

Series 152DG dimensions - Cartridges series FV6, MG:

Model	Dimensions [mm]					
	A	B	C	D	E	In/out
152DGTV014CZ03A	219.1	520	670	250	1294	3"
152DGTV014CZ04A	273.0	600	750	250	1272	4"
152DGTV024CZ06A	355.6	700	800	330	1273	6"
152DGTV034CZ06A	406.4	720	825	360	1280	6"
152DGTV044CZ06A	457.2	770	850	360	1320	6"
152DGTV054CZ08A	508.0	900	940	400	1361	8"
152DGTV074CZ08A	558.8	950	940	420	1334	8"
152DGTV084CZ10A	609.6	1060	1000	470	1383	10"
152DGTV094CZ10A	660.4	1100	1050	500	1311	10"
152DGTV124CZ12A	711.2	1150	1050	500	1365	12"
152DGTV144CZ12A	762.0	1200	1130	510	1378	12"
152DGTV154CZ14A	812.8	1350	1150	550	1378	14"
152DGTV194CZ16A	863.6	1440	1200	600	1470	16"
152DGTV204CZ16A	914.4	1500	1200	600	1470	16"
152DGTV224CZ18A	965.2	1570	1200	650	1500	18"
152DGTV254CZ20A	1016	1600	1200	700	1500	20"

Model	Dimensions [mm]					
	A	B	C	D	E	In/out
152DGTG014CL03A	219.1	260	600	1277	480	3"
152DGTG014CL04A	273.0	300	600	1280	510	4"
152DGTG024CL06A	355.6	350	650	1273	600	6"
152DGTG034CL06A	406.4	360	680	1280	635	6"
152DGTG044CL06A	457.2	385	720	1320	650	6"
152DGTG054CL08A	508.0	450	800	1386	788	8"
152DGTG074CL08A	558.8	475	830	1334	800	8"
152DGTG084CL10A	609.6	530	850	1383	870	10"
152DGTG094CL10A	660.4	550	885	1380	870	10"
152DGTG124CL12A	711.2	575	900	1380	870	12"
152DGTG144CL12A	762.0	600	930	1380	880	12"
152DGTG154CL14A	812.8	675	960	1380	970	14"
152DGTG194CL16A	863.6	720	990	1470	1030	16"
152DGTG204CL16A	914.4	750	1000	1470	1040	16"
152DGTG224CL18A	965.2	790	1000	1500	1050	18"
152DGTG254CL20A	1016	800	1000	1500	1200	20"

Allowable flow-rate depends from coalescer cartridges type, filtration rating, gas density and minimum working pressure. The dimensions shown and cartridges quantity are valid for rating up to 300#; for higher rating contact ASCO Filtri.



DG Series

DRY GAS FILTERS
TAILOR MADE

MAIN APPLICATIONS:

- PROTECTION OF:
- LG COALESCER FILTERS
- FLOW METERS
- VALVES
- PRESSURE REGULATORS
- COMPRESSORS
- TURBINES
- BURNERS
- HEAT EXCHANGERS
- MOLECULAR SIEVES
- REFINERIES
- CHEMICAL PLANTS
- GAS PIPELINES
- GAS COMPRESSION STATIONS
- TECHNICAL GAS PRODUCTION
- REMOVAL OF:
- MOLECULAR SIEVES
- CATALYSTS

FLUIDS:

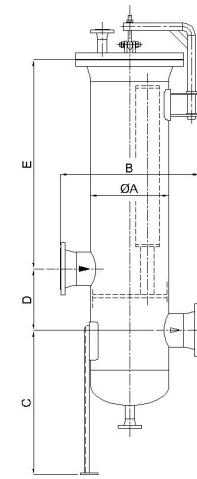
- NATURAL GAS
- PROCESS GAS
- SYNGAS
- BIOGAS
- AIR
- NITROGEN
- HYDROGEN
- OTHER TECHNICAL GASES

ASCO
FILTRI
a **mott** company

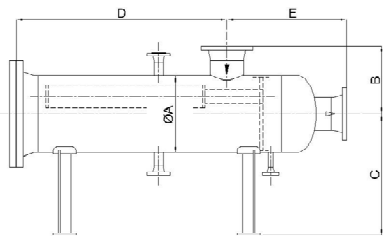
ASCO Filtri S.p.A.
Viale delle Scienze, 8
20082 Binasco (MI) - Italy
Phone: +39 02 89703.1
Fax: +39 02 89703.410
E-mail: info@ascofiltri.com
Web: www.ascofiltri.com

Series 140DG dimensions - Cartridges series PFG536-WLGP/SLGP 530-540:

Model	Dimensions [mm]					
	A	B	C	D	E	In/out
140DGTV014CZ04A	219.1	480	670	250	1200	4"
140DGTV014CZ04A	273.0	600	750	250	1155	4"
140DGTV024CZ06A	323.8	650	800	300	1170	6"
140DGTV024CZ06A	355.6	700	800	330	1171	6"
140DGTV044CZ08A	406.4	800	850	400	1205	8"
140DGTV054CZ08A	457.2	850	950	400	1343	8"
140DGTV074CZ10A	508.0	900	940	400	1270	10"
140DGTV084CZ10A	558.8	1010	1000	470	1280	10"
140DGTV094CZ12A	609.6	1060	1000	470	1280	12"
140DGTV094CZ12A	660.4	1100	1050	500	1280	12"
140DGTV144CZ14A	711.2	1150	1050	500	1280	14"
140DGTV164CZ14A	762.0	1300	1130	550	1330	14"
140DGTV194CZ16A	812.8	1350	1150	550	1320	16"
140DGTV214CZ16A	863.6	1440	1200	600	1370	16"
140DGTV234CZ18A	914.4	1500	1200	600	1370	18"
140DGTV244CZ18A	965.2	1580	1200	650	1400	18"
140DGTV304CZ20A	1016	1600	1200	800	1400	20"



Model	Dimensions [mm]					
	A	B	C	D	E	In/out
140DGH014CL04A	219.1	260	600	1200	480	4"
140DGH014CL04A	273.0	300	600	1170	510	4"
140DGH024CL06A	323.8	325	625	1170	590	6"
140DGH024CL06A	355.6	350	650	1171	600	6"
140DGH044CL08A	406.4	400	680	1205	750	8"
140DGH054CL08A	457.2	425	775	1343	750	8"
140DGH074CL10A	508.0	450	800	1270	780	10"
140DGH084CL10A	558.8	505	830	1280	900	10"
140DGH094CL12A	609.6	530	850	1280	915	12"
140DGH094CL12A	660.4	550	915	1280	920	12"
140DGH144CL14A	711.2	575	920	1280	920	14"
140DGH164CL14A	762.0	650	930	1380	920	14"
140DGH194CL16A	812.8	675	960	1320	970	16"
140DGH214CL16A	863.6	720	990	1370	1030	16"
140DGH234CL18A	914.4	750	1000	1370	1040	18"
140DGH244CL18A	965.2	790	1000	1400	1100	18"
140DGH304CL20A	1016	800	1000	1400	1150	20"

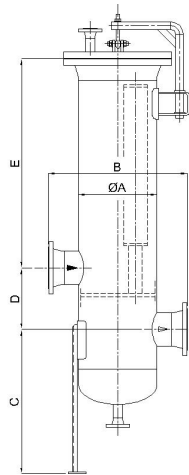


Allowable flow-rate depends from coalescer cartridges type, filtration rating, gas density and minimum working pressure.
The dimensions shown and cartridges quantity are valid for rating up to 300#; for higher rating contact ASCO Filtri.

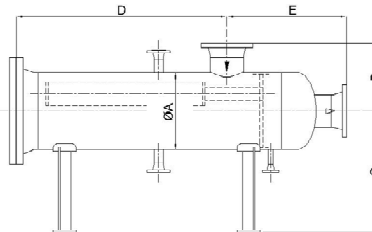


Series 120DG dimensions - Cartridges series FV/WLGP/SLGP 420-430-440:

Model	Dimensions [mm]					
	A	B	C	D	E	In/out
120DGTV014CZ03A	168.3	480	680	110	1200	3"
120DGTV034CZ06A	323.8	650	800	370	1230	6"
120DGTV044CZ06A	355.6	700	800	370	1230	6"
120DGTV054CZ08A	406.4	800	850	420	1260	8"
120DGTV074CZ08A	457.2	850	950	420	1260	8"
120DGTV094CZ10A	508.0	900	940	450	1400	10"
120DGTV104CZ10A	558.8	1010	1000	450	1400	10"
120DGTV144CZ12A	609.6	1060	1000	520	1320	12"
120DGTV154CZ12A	660.4	1100	1050	520	1320	12"
120DGTV194CZ14A	711.2	1150	1050	560	1330	14"
120DGTV224CZ14A	762.0	1300	1130	560	1330	14"
120DGTV234CZ16A	812.8	1350	1150	600	1350	16"
120DGTV294CZ16A	863.6	1440	1200	600	1350	16"
120DGTV324CZ18A	914.4	1500	1200	660	1380	18"
120DGTV374CZ18A	965.2	1600	1200	660	1380	18"
120DGTV404CZ20A	1016	1620	1200	700	1400	20"



Model	Dimensions [mm]					
	A	B	C	D	E	In/out
120DGH014CZ03A	168.3	240	550	1200	580	3"
120DGH034CZ06A	323.8	325	625	1230	640	6"
120DGH044CZ06A	355.6	350	650	1230	640	6"
120DGH054CZ08A	406.4	400	680	1260	750	8"
120DGH074CZ08A	457.2	425	775	1260	750	8"
120DGH094CZ10A	508.0	450	800	1400	800	10"
120DGH104CZ10A	558.8	505	830	1400	800	10"
120DGH134CZ12A	609.6	530	850	1320	850	12"
120DGH154CZ12A	660.4	550	915	1320	850	12"
120DGH194CZ14A	711.2	575	920	1330	940	14"
120DGH224CZ14A	762.0	650	930	1330	940	14"
120DGH234CZ16A	812.8	675	960	1350	1030	16"
120DGH294CZ16A	863.6	720	990	1350	1030	16"
120DGH324CZ18A	914.4	750	1000	1380	1100	18"
120DGH374CL18A	965.2	800	1000	1380	1100	18"
120DGH404CL20A	1016	810	1000	1400	1130	20"



Allowable flow-rate depends from coalescer cartridges type, filtration rating, gas density and minimum working pressure. The dimensions shown and cartridges quantity are valid for rating up to 300#; for higher rating contact ASCO Filtri.



DG Series

**DRY GAS FILTERS
TAILOR MADE**

**ASCO
FILTRI**

a **mott** company

ASCO Filtri S.p.A.

Viale delle Scienze, 8

20082 Binasco (MI) - Italy

Phone: +39 02 89703.1

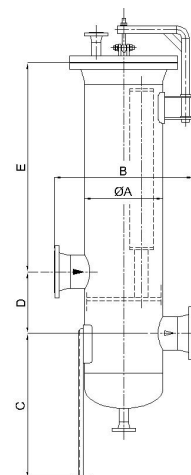
Fax: +39 02 89703.410

E-mail: info@ascofiltri.com

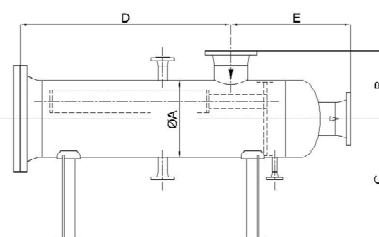
Web: www.ascofiltri.com

Series 116DG dimensions - Cartridges series PBTG-PFG:

Model	Dimensions [mm]					
	A	B	C	D	E	In/out
116DGTV014CZ03A	168.3	480	680	290	1200	3"
116DGTV024CZ04A	273.0	600	750	320	1200	4"
116DGTV034CZ06A	323.8	650	800	370	1230	6"
116DGTV044CZ06A	355.6	700	800	380	1230	6"
116DGTV074CZ08A	406.4	800	850	420	1260	8"
116DGTV074CZ08A	457.2	850	950	420	1260	8"
116DGTV094CZ08A	508.0	900	940	480	1290	10"
116DGTV124CZ10A	558.8	1010	1000	480	1290	10"
116DGTV154CZ10A	609.6	1060	1000	520	1310	12"
116DGTV174CZ12A	660.4	1100	1050	520	1310	12"
116DGTV214CZ14A	711.2	1150	1050	560	1330	14"
116DGTV234CZ14A	762.0	1300	1130	560	1330	14"
116DGTV264CZ16A	812.8	1350	1150	600	1350	16"
116DGTV314CZ16A	863.6	1440	1200	600	1350	16"
116DGTV354CZ18A	914.4	1500	1200	660	1380	18"
116DGTV404CZ18A	965.2	1580	1200	660	1380	18"
116DGTV434CZ20A	1016	1620	1200	710	1400	20"



Model	Dimensions [mm]					
	A	B	C	D	E	In/out
116DGTG014CL03A	168.3	240	550	1200	580	3"
116DGTG024CL04A	273.0	300	600	1200	610	4"
116DGTG034CL06A	323.8	325	625	1230	650	6"
116DGTG044CL06A	355.6	350	650	1230	600	6"
116DGTG074CL08A	406.4	400	680	1260	610	8"
116DGTG074CL08A	457.2	425	775	1260	610	8"
116DGTG094CL10A	508.0	450	800	1290	790	10"
116DGTG124CL10A	558.8	505	830	1290	800	10"
116DGTG154CL10A	609.6	530	850	1310	850	12"
116DGTG174CL12A	660.4	550	915	1310	850	12"
116DGTG214CL14A	711.2	575	920	1330	920	14"
116DGTG234CL14A	762.0	650	930	1330	950	14"
116DGTG264CL16A	812.8	675	960	1350	990	16"
116DGTG314CL16A	863.6	720	990	1350	1000	16"
116DGTG354CL18A	914.4	750	1000	1380	1030	18"
116DGTG404CL18A	965.2	790	1000	1380	1100	18"
116DGTG434CL20A	1016	610	1000	1400	1140	20"



Allowable flow-rate depends from coalescer cartridges type, filtration rating, gas density and minimum working pressure.
The dimensions shown and cartridges quantity are valid for rating up to 300#; for higher rating contact ASCO Filtri.

Contact us for any further information.